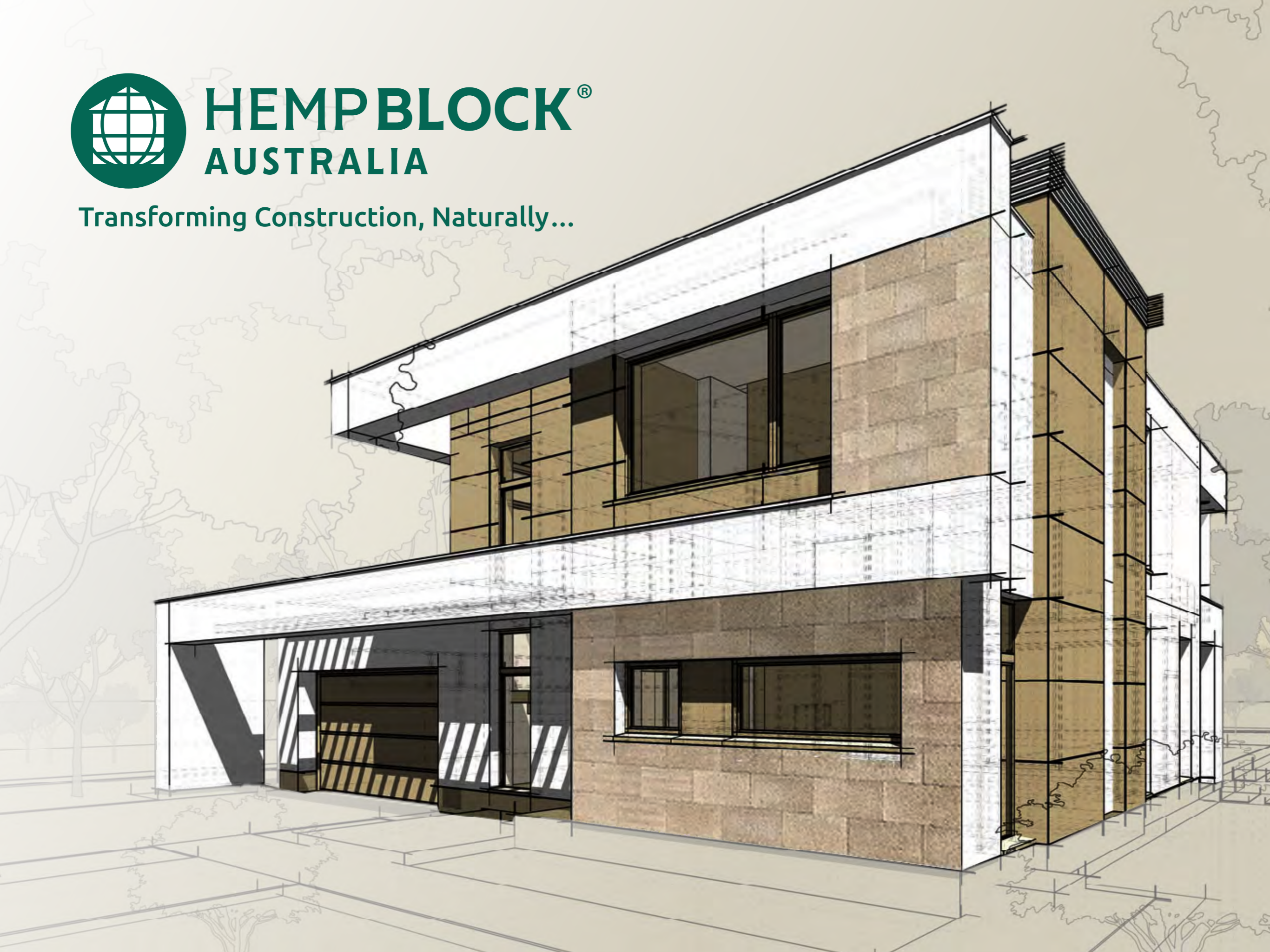




HEMPBLOCK[®]
AUSTRALIA

Transforming Construction, Naturally...



HEMPBLOCKS WALLING SYSTEMS: A SUPERIOR SOLUTION



Setting a new
standard of
excellence that
is unmatched
by any other
product.



Load Bearing



Fast & Easy
Assembly



Termite
Resistant



Mould
Resistant



Fire Resistant



Carbon
Negative



Excellent Thermal
Insulation



Energy
Efficient



All
Natural



HEMPBLOCK - BUILDING CODE COMPLIANT & ENERGY EFFICIENT

Certified as Compliant
with the **Australian
Building Code**



Included in the
Nathers Database



HEMPBLOCK TECHNOLOGY COMPARED TO TRADITIONAL BUILDING MATERIALS

HempBLOCKs - The Math is Simple...

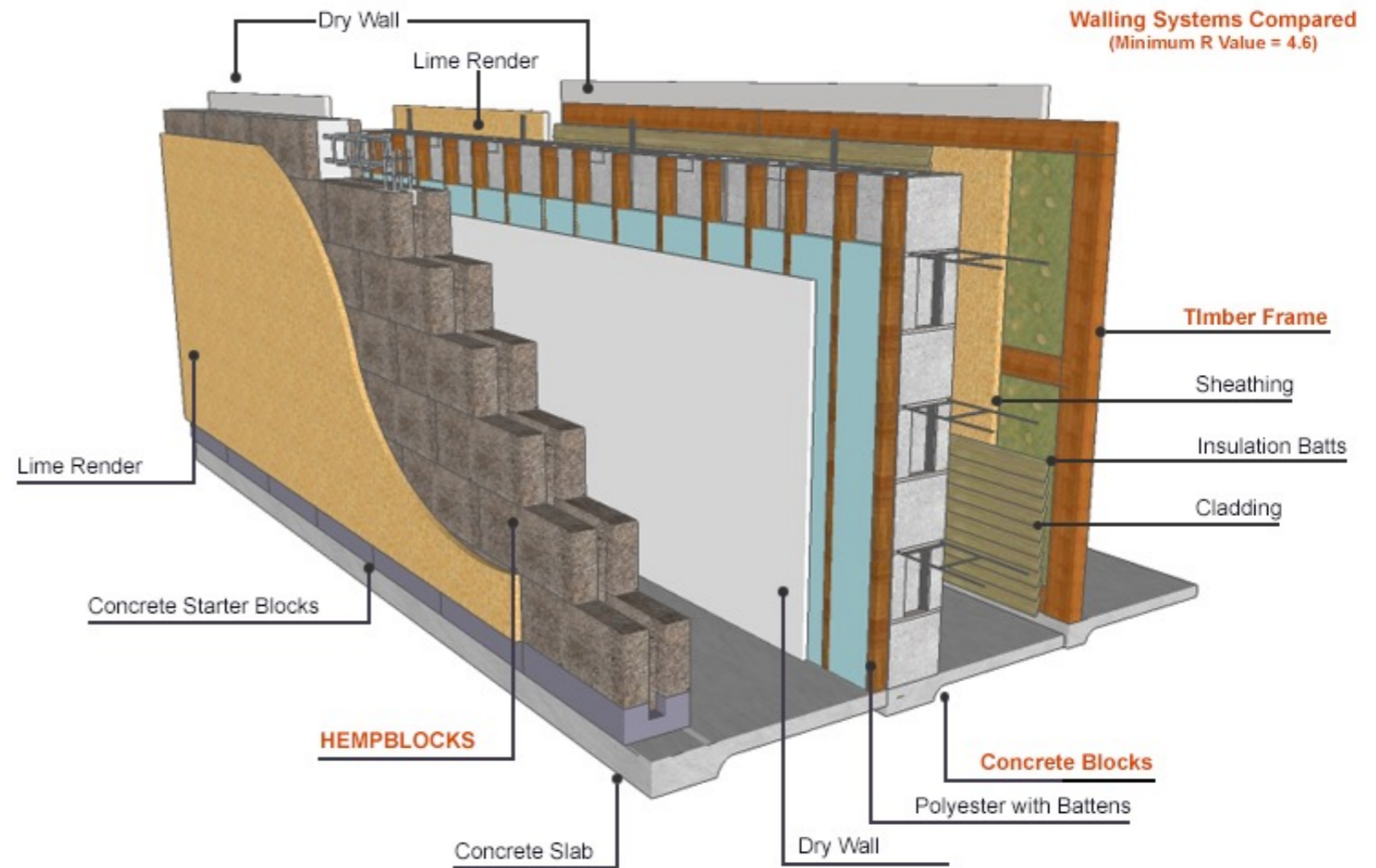
Less Materials,
Labor, Climate
Control & CO₂

=

**SUPERIOR
OUTCOME**

NO NEED FOR ADDITIONAL:

- Wall Insulation
- Sound Dampening
- Heating and Cooling
- Pest or Mould Control
- Fire Protection



Easily integrated into existing building practices



HEMPBLOCK WALLING SYSTEMS

Structural Options for the LB 300 Dry-Stacked Interlocking HEMPBLOCKS

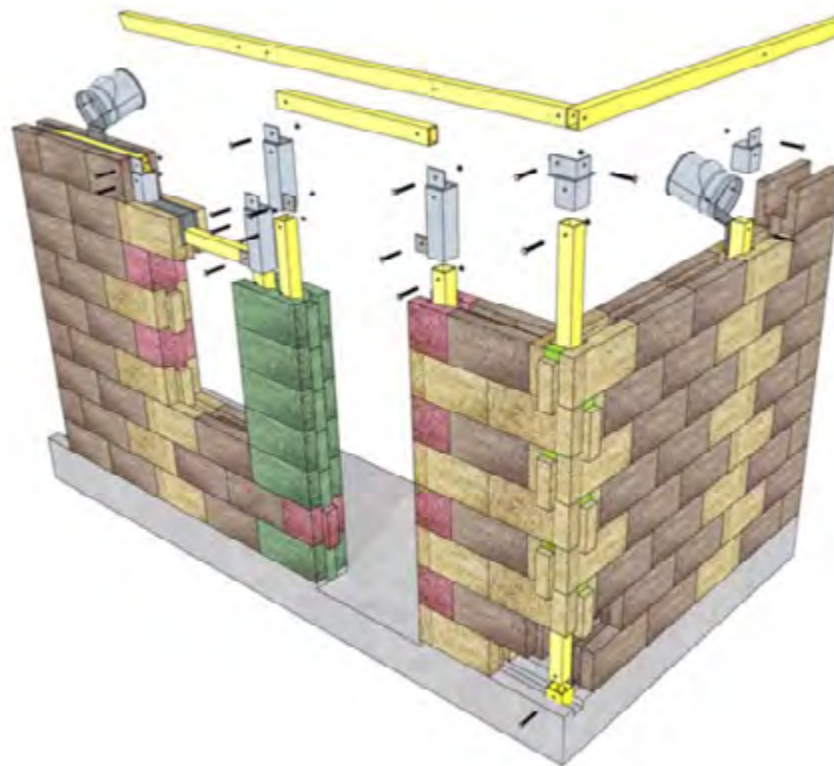
HempBLOCKs arrive on-site ready to use just like any block or brick. Interlocking HempBLOCKs:

- Don't require mortar jointing,
- Are installed up to 70% faster than other building materials and
- Our proprietary load-bearing structure is incorporated into the HempBLOCK walling system during construction.

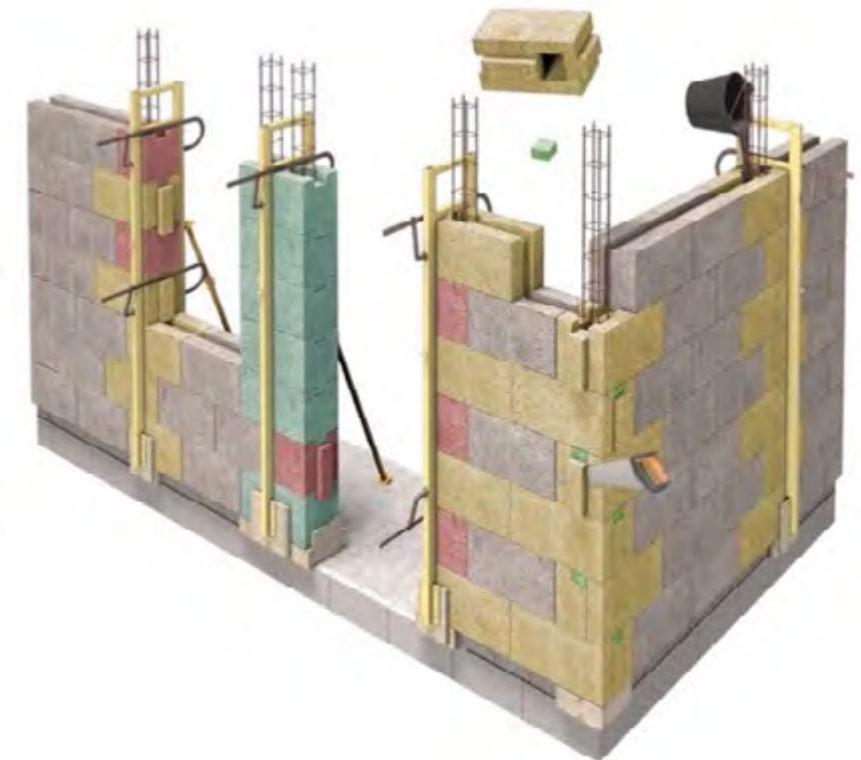
The building system is easily integrated into existing building practices as no additional skills or specialist equipment are required to assemble the HempBLOCK walls.

In fact, it requires more skills to build a brick, concrete block or a timber framed wall.

FRP or Steel - Post and Beam (Our PCT Patent - Preferred Method)



Concrete & Reinforcing Steel (Optional Method)



THE HEMPBLOCK PRODUCTS

FACTORY PRODUCED



SOLID



1 COLUMN



2 COLUMN



LINTEL

LB 300 DRY STACKED INTERLOCKING HEMPBLOCKS



TESTED & CERTIFIED



HEMPBLOCK AUSTRALIA SERVICES & PARTNERS

Our Services



Architectural Design

Our designated team provides an integrated & comprehensive design service.



Engineering Services

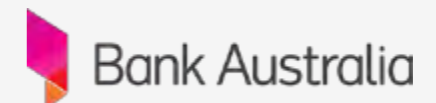
Structural engineering design and certification as required.



Builder Training

Training of builders nationally to ensure product & construction integrity.

Our Supply & Support Partners - International and Australian



KEY DOCUMENTS - HEMPBLOCK AUSTRALIA



[CLICK HERE](#)

Full Lifecycle Analysis

Environmental Product Declaration



[CLICK HERE](#)

Building Code Compliance

Certificate of Conformity with the Australian Building Code



[CLICK HERE](#)

Performance Data

Technical details & key performance data



[CLICK HERE](#)

Cost and CO₂ Comparisons

HempBLOCK walling system compared to concrete block walling system



[CLICK HERE](#)

Fiber Reinforced Polymers

Composite fiber technology for structural posts and beams



[CLICK HERE](#)

Installation Manual (LB300)

Comprehensive documentation of 3 different HempBLOCK walling methods



[CLICK HERE](#)

Installation Manual (Solid)

Comprehensive documentation using solid HempBLOCKs for interior walling



[CLICK HERE](#)

Project Examples

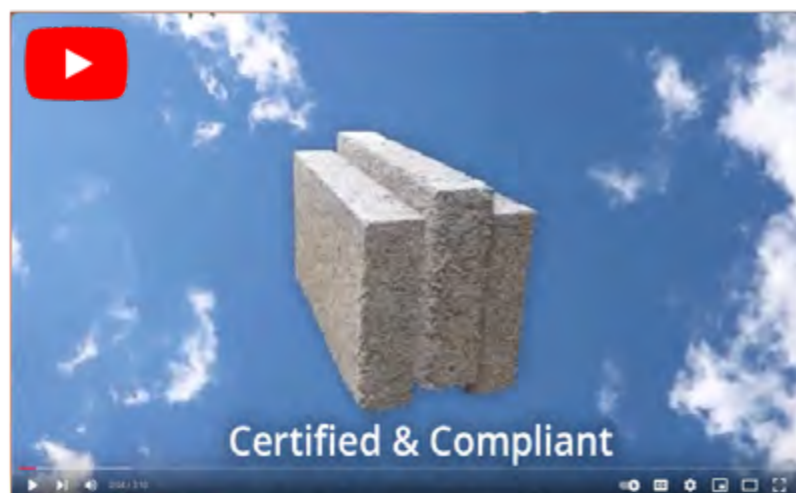
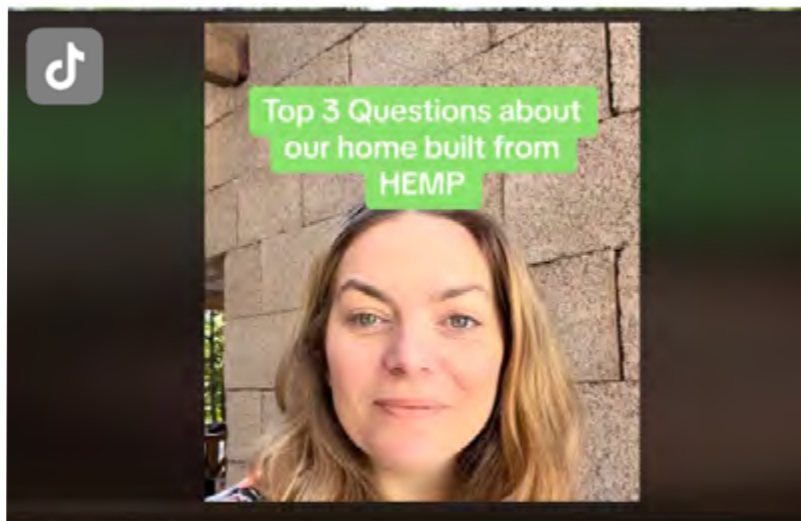
Commercial and residential building projects and training

Information Channels

[CLICK HERE](#)



VIDEOS - HEMPBLOCK INTERNATIONAL





HEMPBLOCK[®]
AUSTRALIA

Transforming Construction, Naturally.

www.hempblockaustralia.com